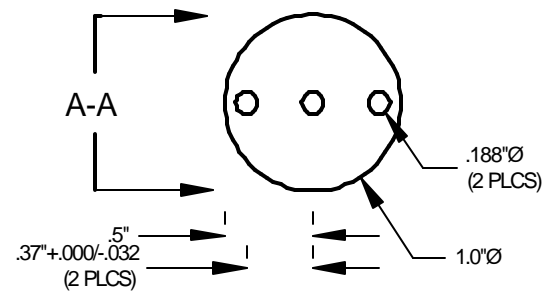
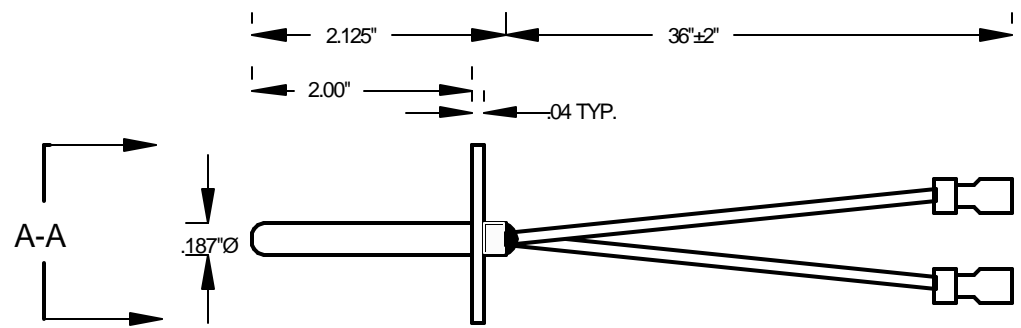


Dash		

Customer Approval: _____
 Date: _____

ECO Number	Date	Description



Element: PT1000 '385" Class B IEC751 DIN 43760
 Sheath: SS304/316 Closed One End Commercial Grade
 Construction: Epoxy End Seal
 Wire: Teflon Insulated SPC 22/7 Type E 1-Black & 1-White
 Wire Termination: 3/16" Fully Insulated Female Quick Connect
 Operating Temperature: -50°C to +260°C

Probes Unlimited Inc.

1330 Eddowes Road
 Warminster, PA 18974
 (215)491-2639 (voice)
 (215) 491-2473 (fax)
 info@temp-probes.com (e-mail)



PUI Part Number	PUI P/N Rev
P1000-13024-1	----

Quote #	Date Of Quote
---------	---------------